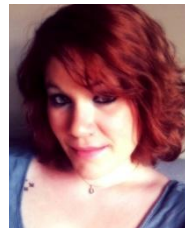




Robyn Warfield



4140 Welling Ave Charlotte NC 28208 | 631.901.7779 | rkw1031@gmail.com

EDUCATION

University of North Carolina at Greensboro

M.F.A. in Design with Scenographic Traditions

Areas of Concentration: Lighting and Set

Production Thesis: Lighting Design for *The Marriage of Figaro*

2014

Massachusetts College of Liberal Arts

B.A. in Fine and Performing Arts with Cum Laude

Area of Concentration: Theatre

2010

AWARDS

Massachusetts College of Liberal Arts Harlequin Drama Award

2010

TEACHING EXPERIENCE

Children's Theatre of Charlotte - Charlotte, NC

Teaching Artist

Behind the Scenes instructor for summer camps. Teach all areas of technical theatre. Oversee the students who act as the tech crew for the shows during showcases.

Summer 2020, 2021

Bard College at Simon's Rock-Great Barrington, MA

Guest Lecturer

Guest lectured a class on lighting design and technology for the Creative Disciplines in Technical Theatre I at Simon's Rock.

2015

Shakespeare and Company-Lenox, MA

Educational Artist-Fall Festival of Shakespeare

Mentor and teach design and technology to 400 students divided between 10 different high schools each fall for two months.

Fall 2011, 2014, 2015, 2016

Shakespeare and Company-Lenox, MA

Educational Artist-Shakespeare and Company's Winter Residency

Mentored and taught design and technology to students ranging from grade 6-12.

Winter 2012

University of North Carolina at Greensboro-Greensboro, NC

Graduate Teaching Assistantship

Teaching assistant in the scenic, lighting, and paint and props shop. Worked with stagecraft 101 students to teach them the proper use of the carpentry tools and how to build the scenery for each of the shows. Worked with Undergraduate Assistants to maintain and keep the shops at a working and safe condition. Worked with and taught students the processes of lighting hang and focuses for each of the shows.

2012-2014

University of North Carolina at Greensboro-Greensboro, NC

Teaching Assistant-to Professor Ken White "Intro to CAD"

Sat in on each class and was there as support in helping students with understanding the computer drafting program.

Spring 2014

Massachusetts College of Liberal Arts-North Adams, MA

Teaching Assistant- to Professor Dawn Shamburger "Exploring Production"

Helped to prepare for each class by making copies of the reading materials needed. Sat in on each class and was support for questions. Taught sections of the class in which I had an interest in teaching.

Spring 2010

RELATED EXPERIENCE**LIGHTING DESIGN**

Children's Theatre of Charlotte

Resident Lighting Designer and Master Electrician**2018-present**

Create and implement lighting design for shows and run the electrics department. Hire crew, track budgets, implement the designs handed to me from outside lighting designers.

Providence Day School

Lighting Designer**Fall 2021, Spring 2022, 2023**

Lighting designer and mentor to students. *She Kills Monsters, Shrek JR., Once Upon A Mattress*

Mooresville Community Children's Theatre

Lighting Designer**Summer 2021, 2022, 2023**

Lighting designer for both young and older group shows. *School House Rock Live!, Seussical Jr., High School Musical, The Little Mermaid*

Charlotte Conservatory Theatre

Lighting Designer**Summer 2022**

Lighting Designer for the company's debut show *Witch* at Booth Playhouse in Charlotte.

Blumenthal Performing Arts

Lighting Designer**Summer 2022**

Lighting Designer for live variety show *Charlotte Squawks*

MCLA's Dance Company

Lighting Director**2014 – 2017**

Create and implement the lighting for the fall and spring dance company shows. Work with each choreographer to illuminate and support the story that they are trying to tell.

WAM Girls Ensemble

Lighting Design Consultant**Winter 2017**

Lighting Designer for WAM's education department for their Girls Ensemble 30 min new work

Shrek the Musical

Lighting Designer**Winter 2017**

Herrick's Middle School production of Shrek

Mark In Venice

Lighting Designer**Fall 2016**

Lighting Designer for *Mark In Venice*, a workshop production of a new play about religion and current events throughout different centuries

Henry VI.6

Lighting Designer**Summer 2016**

Lighting Designer for one day Shakespeare 400th Celebration at Shakespeare and Company

Sotto Voce

Lighting Designer**Summer 2016**

Lighting Designer for *Sotto Voce* directed by Daniel Gidron

WAM's 24 HR Play Project

Lighting Designer**Spring 2016**

Lighting Designer for WAM Theatre Company's 24 hour play project

Grace and Glorie

Lighting Designer**Spring 2016**

Lighting Designer for *Grace and Glorie* directed by Tim L'Ecyuer

Hamlet Lighting Designer Lighting Designer for <i>Hamlet</i> adapted and directed by Celeste Moratti	Winter 2016
The Little Mermaid Lighting Designer Lighting Designer for The Herrick's Middle School's production of <i>The Little Mermaid</i>	Winter 2016
Babylon Revisited Lighting Designer Lighting Designer for a mixed multimedia theatre experience based off of F. Scott Fitzgerald's book <i>Babylon Revisited</i> directed by Donald Marcus	Fall 2015
All Rise: Court Dance Lighting Designer Lighting Designer for a new work choreographed by Dawn Lane	Fall 2015
The Unexpected Man Lighting Designer Lighting Designer for <i>The Unexpected Man</i> directed by Seth Gordon	Summer 2015
Romeo and Juliet Lighting Designer Lighting Designer for S&Co Conservatory production of <i>Romeo and Juliet</i> directed by Tori Rhodes and Jason Asprey	Fall 2014
Private Eyes Lighting Designer Lighting Designer for <i>Private Eyes</i> directed by Jon Croy	Fall 2014
The Marriage of Figaro (MFA thesis) Lighting Designer-UNCG SMTD Lighting Designer for <i>The Marriage of Figaro</i> Stage and Musical Direction by David Holley	Spring 2014
Gruesome Playground Injuries Lighting Designer-Paper Lantern Theatre Company Lighting Designer for <i>Gruesome Playground Injuries</i> directed by Jim Wren	Spring 2014
Peter Pan Lighting Designer-NC TYP Lighting Designer for <i>Peter Pan</i> directed by Rachel Briley	Fall 2013
<i>Spamalot</i> Assistant Lighting Designer-UNCG Theatre Assistant Lighting Designer on Monty Python's <i>Spamalot</i> Lighting Design by Ken White	Winter 2013
God of Carnage Lighting Designer-UNCG THR232 Lighting Designer for <i>God of Carnage</i> directed by Matthew Teague Miller	Summer 2013
<i>Top Girls</i> Lighting Designer-UNCG Theatre Lighting Designer for <i>Top Girls</i> directed by Christine Morris	Spring 2013
<i>Kingdom of Earth</i> Assistant Lighting Designer-Triad Stage Assistant Lighting Designer on show <i>Kingdom of Earth</i> by Tennessee Williams Lighting Design by Jesse Belsky	Winter 2013
<i>The Marriage of Bette and Boo</i> Lighting Designer-Austen Riggs Center Lighting Designer for <i>The Marriage of Bette and Boo</i> directed by Kevin Coleman	Fall 2011

MCLA Dance Company

Lighting Designer-Dance Company

Student Lighting Designer for Spring Dance Company

Spring 2010

Hamlet

Lighting Designer-Yorick

Lighting Designer for *Hamlet* directed by Jesse Lee Egan Poirer

Spring 2010

The Wild Party

Lighting Designer-Harlequin

Lighting Designer for *The Wild Party* directed by Michael Geary

Spring 2010

The Mouse that Roared

Lighting Designer-MCLA FPA

Lighting Designer for *The Mouse that Roared* directed by Doug Jenkins

Spring 2010

MCLA Dance Company

Lighting Designer-Dance Company

Student Lighting Designer for Fall Dance Company

Fall 2009

The Comedy of Errors

Lighting Designer-Yorick

Lighting Designer for *The Comedy of Errors* directed by Melissa Wolfert

Fall 2009

Two on an Island

Lighting Designer-MCLA FPA

Lighting Designer for *Two on an Island* directed by Bonnie Bishop

Fall 2009

Once Upon a Mattress

Lighting Designer-Harlequin

Lighting Designer for *Once Upon a Mattress* directed by Brinn Kingsley

Spring 2009

Heroes Vs. Villains: A Physics Circus

Lighting Designer-Physics and FPA department

Lighting Designer for a Core Tier 3 class based on teaching physics through theatre

Spring 2009

Bitches, Bimbos and Ballbreakers: A Guide to Female Stereotypes

Lighting Designer-Susan B. Anthony Women's Center

Lighting Designer for the world premier based of *Bitches, Bimbos, and Ballbreakers* based off of the Guerilla Girls.

Spring 2009

SET DESIGN

Shakespeare and Company's Fall Festival of Shakespeare

Production Designer

Work with 2 separate high schools on each of their 90 minute Shakespeare productions. Work with the students who are interested in the technical and design aspects of theatre. Teach them how to articulate their needs for the show and work with their directors. Help in the design and implementation of the set, props, and lighting for the in school performances and the weekend long festival at Shakespeare and Company's property.

2011, 2014, 2015, 2016, 2017

- *Twelfth Night*-2015
- *Antony and Cleopatra*-2015
- *A Midsummer Night's Dream*-2014
- *The Winter's Tale*-2014
- *Macbeth*-2011
- *Much Ado About Nothing*-2011

Beauty and the Beast

Set Designer

Set Designer for The Herrick's Middle School's production of *Beauty and the Beast*

Winter 2018

Shrek the Musical Set Designer Set Designer for The Herrick's Middle School's production of <i>Shrek the Musical</i>	Winter 2017
The Little Mermaid Set Designer Set Designer for The Herrick's Middle School's production of <i>The Little Mermaid</i>	Winter 2016
Hedda Gabler Set Designer-UNCG Theatre Set Designer for <i>Hedda Gabler</i> directed by Dani Keil	Spring 2014
<i>Judith of Bethulia</i> Set Designer-UNCG THR232 Set Designer for <i>Judith of Bethulia</i> directed by Dani Keil	Summer 2013
<i>Julius Caesar</i> Production Designer Shakespeare and Company's Winter Residency at Charlemont Academy	Winter 2012
<i>My Son is Crazy...But Promising</i> Special Effects Coordinator Lead on building a UFO that was hung over the audience	Spring 2009
<i>George Washington Slept Here</i> Special Effects Coordinator Lead on creating a breakaway glass for a window consisting of 24 panes, a water drip system, among other effects	Spring 2008

TECHNICAL THEATRE

Children's Theatre of Charlotte Master Electrician Head of the electrics department. Hire crew and delegate tasks to the electricians, keep track of budgets and calendar, work with directors and designers to help in the creation of the concepts for the individual shows. Do all of the wiring for practicals on set like LED tape and pixel lights. Work with other departments when needed.	2018 – present
Frost Productions Electrician/Carpenter Works on crews to install and strike events in NYC ranging from bar mitzvahs to fashion week shows.	2017
Shakespeare and Company Master Electrician Run the electrics department. Delegate tasks to the electricians, keep track of budgets, work with directors and designers to help in the creation of the concepts for the individual shows. Work with other departments when needed.	2015 – 2016
Kupferberg Center for the Performing Arts Production Technician Board operator, deck crew, and spotlight operator for touring theatre productions, concerts, dance productions, recitals, comedy shows, and more. Load ins/outs, lighting and sound equipment set up and take downs, and scenery set ups. ASM/Deck Electrician for Dance Theatre Harlem.	Winter/Spring 2015
Shakespeare and Company Summer 2014 Associate Scenic Charge Associate scenic charge for the summer 2014 season. Duty to prep the paint, and research the techniques needed for painting the scenery.	Summer 2014

Shakespeare and Company Summer 2011 Wardrobe Head Founder's Theatre Wardrobe on <i>As You Like It</i> and <i>Romeo and Juliet</i>	Summer 2011
The Shakespeare Theatre of New Jersey Assistant Master Electrician Worked under the supervision of the Lighting and Sound Supervisor. Board op. for fall shows, oversee crews for hang and focus, and maintain equipment	2010 – 2011
The Barnstormers Theatre Master Electrician and Carpenter Maintain lighting equipment, work with lighting designers to hang and focus. Build the sets for the shows	Summer 2010
Massachusetts Museum of Contemporary Art Wardrobe Over Hire Over hire for dance shows as wardrobe head	Fall/Spring 2009
Massachusetts Museum of Contemporary Art Production Intern Hang and focus, maintain lighting equipment, set up sound, set up and take down risers	Summer 2009
Hot 97 Summer Jam Production Assistant Production Assistant for Hot 97 Summer Jam at Giants Stadium	Summer 2008
Diva's With Heart Benefit Concert Production Assistant Production Assistant for benefit concert at Radio City Music Hall	Spring 2008

LANGUAGES

English-native language

SKILLS

General: Good personality, patient, understanding, make sure that my student's education is what should come first, good attitude in the classroom, efficient in my work ethic

General Theatre: Production Electrics, Basic Rigging, Hand Drafting, CAD (see below), Graphics Design, Web Design, Carpentry, Painting, Model Building, Music Literacy, Comfortable troubleshooting issues with lighting instruments, circuits, and dimmers. Fast on my feet when it comes to troubleshooting

Consoles: ETC EOS, ION, Element, Expression III, Express, ETC Sensor Racks, Strand C21 racks

Software: Lightwright; Vectorworks Spotlight; Microsoft Office, Adobe Creative Suite, QLAB

REFERENCES

David Sebren

Artistic Director Goodly Frame Theatre
Cell: (828) 230-0240
davidssebren@gmail.com

Jordan Ellis

Technical Director at Providence Day School
Cell: (704) 692-0873
jordan.ellis@providenceday.org

Steven James

Resident Stage Manager CTC
Cell: (347) 326-0008
stevenj@ctcharlotte.org

Brenna Skinnon

Stage Manager
Cell: (704) 222-7808
brenna.skinnon@gmail.com